

Please read this manual carefully before installation and keep it for future reference.

Owner & Installation Manual



MRCOOL®

COMFORT MADE SIMPLE

Electric Heat Kit Model: MHK**U

Please read this manual carefully before installation and keep it for future reference.

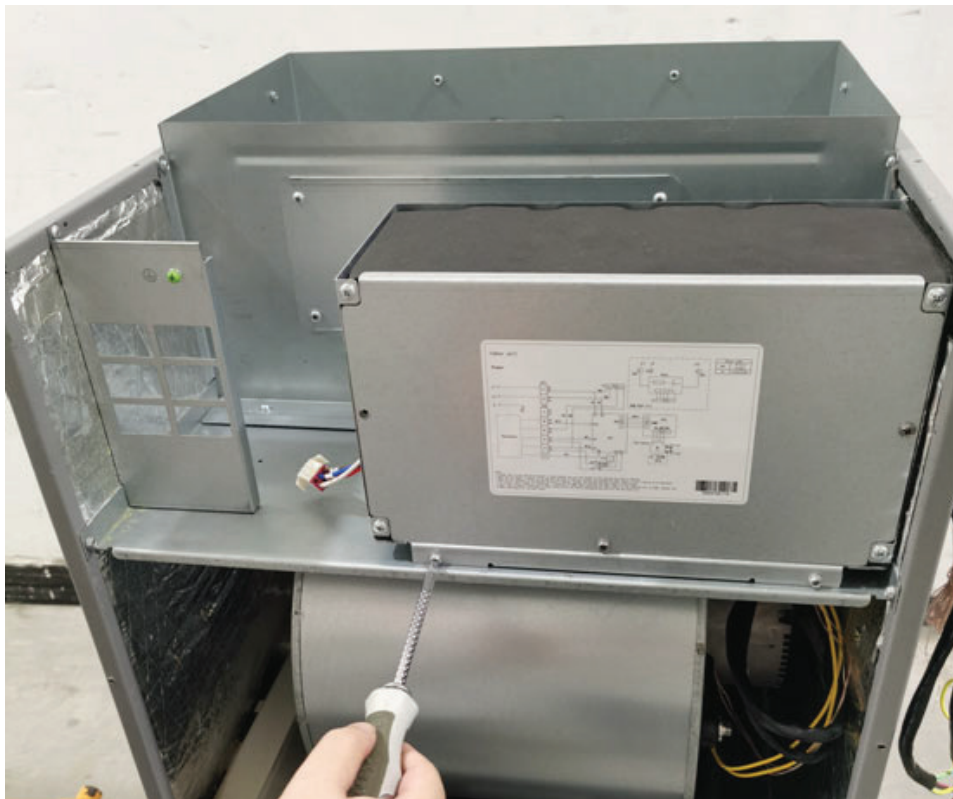
V083120

MRCOOL® Electric Heat Kit

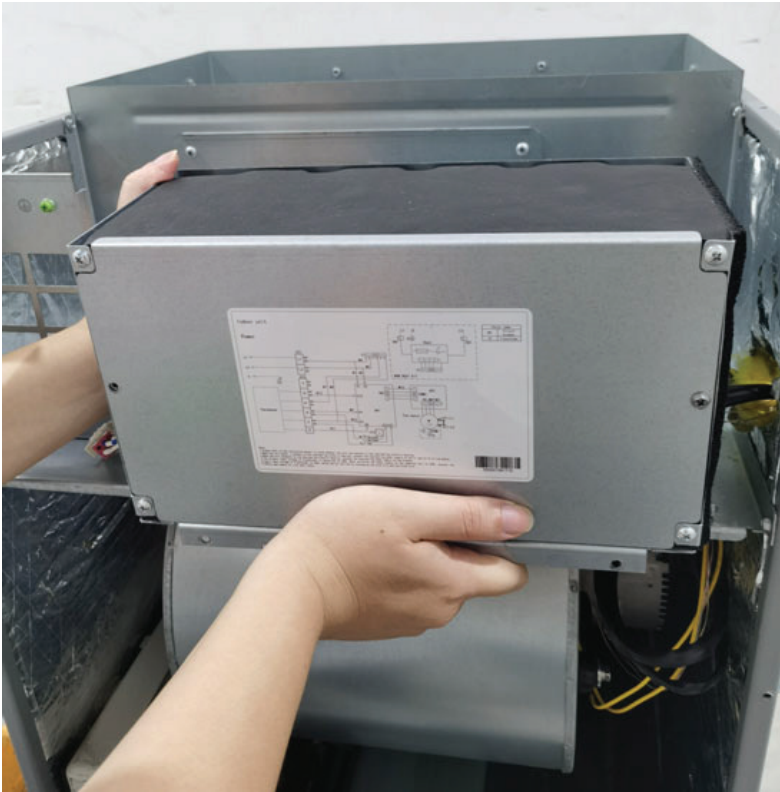
1. Remove the front panel and upper access panel from the air handler.



2. Disassemble the electrical box.



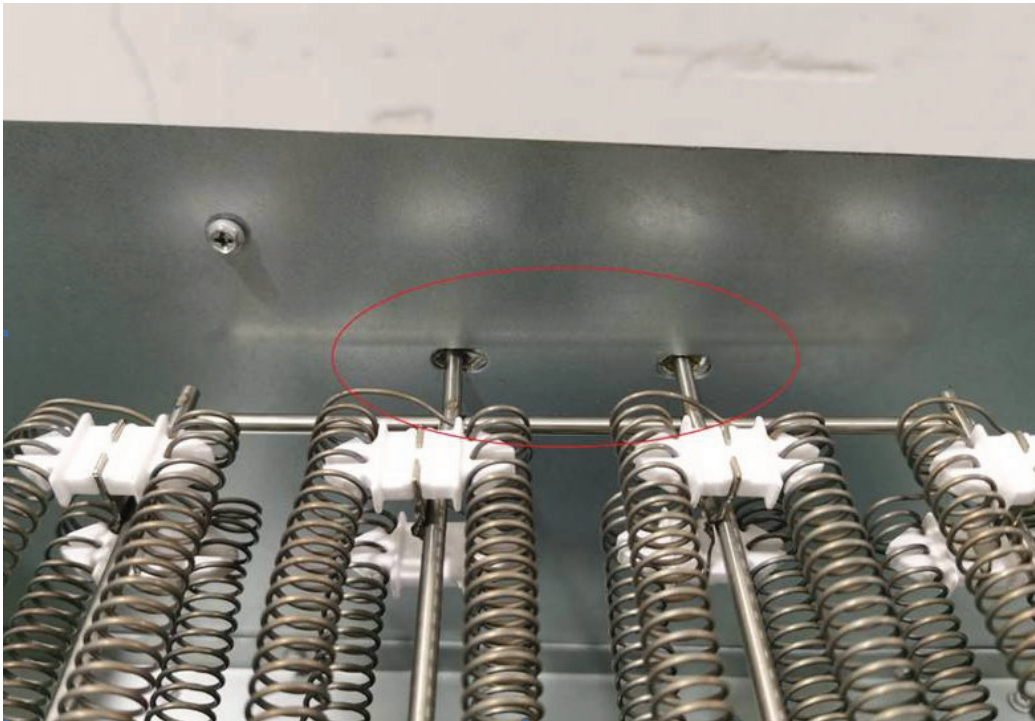
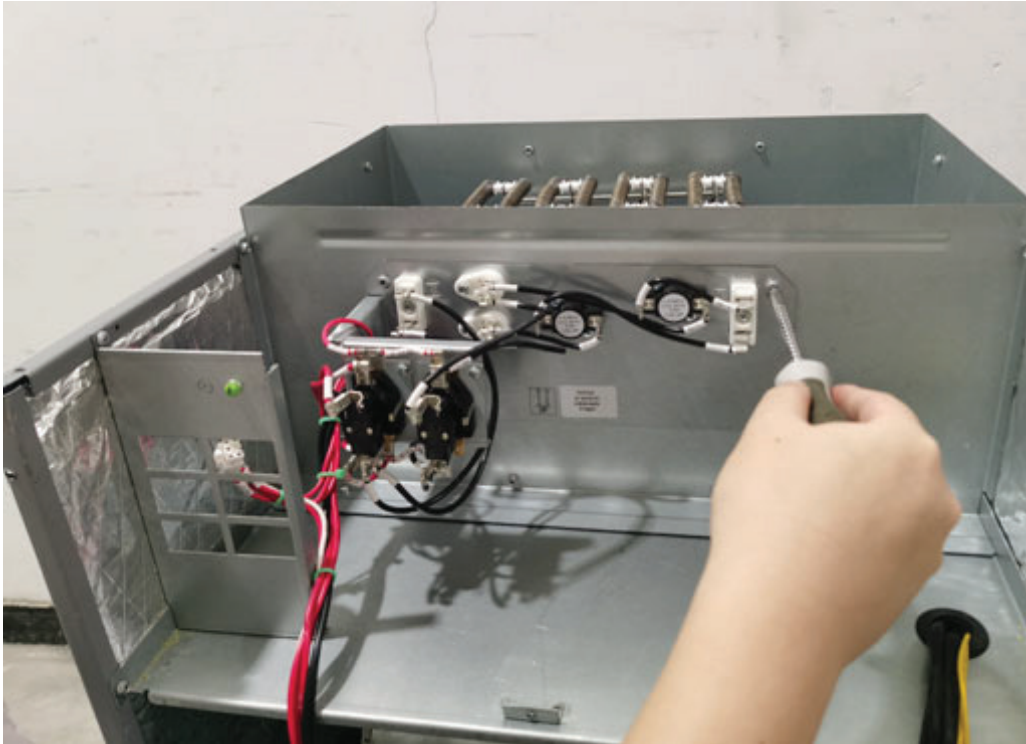
3. Remove the electrical box.



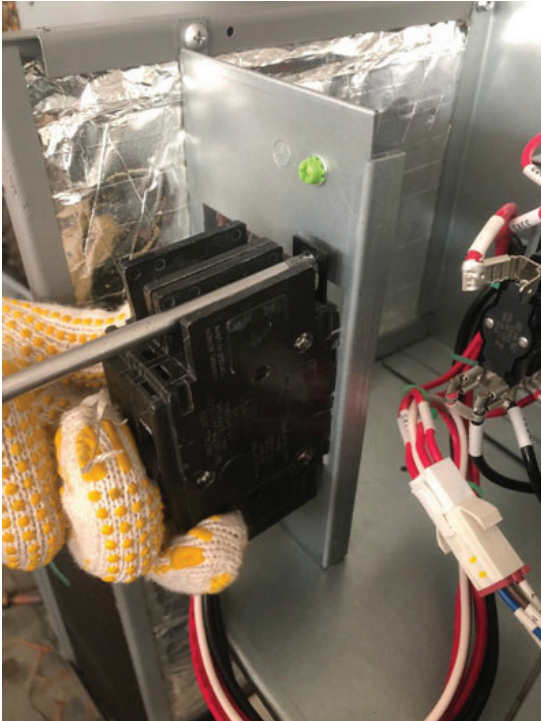
4. Disassemble the metal plate at the mounting hole of the electric heater.



5. Install the electric heater to the metal plate position which disassembled in step 4. (Notes: There are two holes circled below which are used to fasten the electric heater bracket during installation).



6. Install breaker. (Notes: During installation, you need to lift up the buckle first, hold the breaker bracket, and then put down the buckle to fix the breaker).



7. Connect the electric heater terminal.



8. After installation, the schematic diagram is as follows:



9. Install the electrical box back to the original position.



10. Install the front panel and upper panel back to the air handler. Electric heater installation is completed.

	Kit#	Description	Ref. Air Handler use
1	MHK05U	Circuit Breaker,5kW Heat Strip	MDUI18024,36
2	MHK08U	Circuit Breaker,8kW Heat Strip	MDUI18024,36
3	MHK10U	Circuit Breaker,10kW Heat Strip	MDUI18036
4	MHK15U	Circuit Breaker,15kW Heat Strip	MDUI18048,60
5	MHK20U	Circuit Breaker,20kW Heat Strip	MDUI18048,60



MRCOOL[®]

COMFORT MADE SIMPLE

Electric Heat Kit

The design and specifications of this product and/or manual are subject to change without prior notice. Consult with the sales agency or manufacturer for details.